

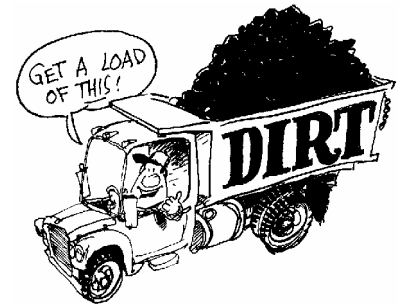
Did You Know?

Rebuilding the I-40/Coors Interchange will require significant amounts of material. Below are a few fun facts about some of the quantities currently forecast for this 18-month, design-build project.



The steel used in the project represents the equivalent of **250,000 bowling balls.**

Crews will excavate or use enough **dirt to fill** the entire **Wal-Mart Superstore** – with some left over.



The concrete used in the I-40/Coors Interchange is enough to **build a six-foot wide sidewalk** from Albuquerque to Belen.



The amount of temporary and permanent **asphalt paving** used would be enough to pave **Balloon Fiesta Park** – twice!

The total length of the **eight bridges** within the Interchange is the **same length** of the single southbound I-25 to eastbound I-40 Bridge on The Big I.

The amount of retaining **walls** on the project is enough to **build a five-foot tall wall** for six miles - or **from Coors Boulevard to San Mateo Boulevard.**

*All quantities are estimates and are subject to change during the project.
December 2004*